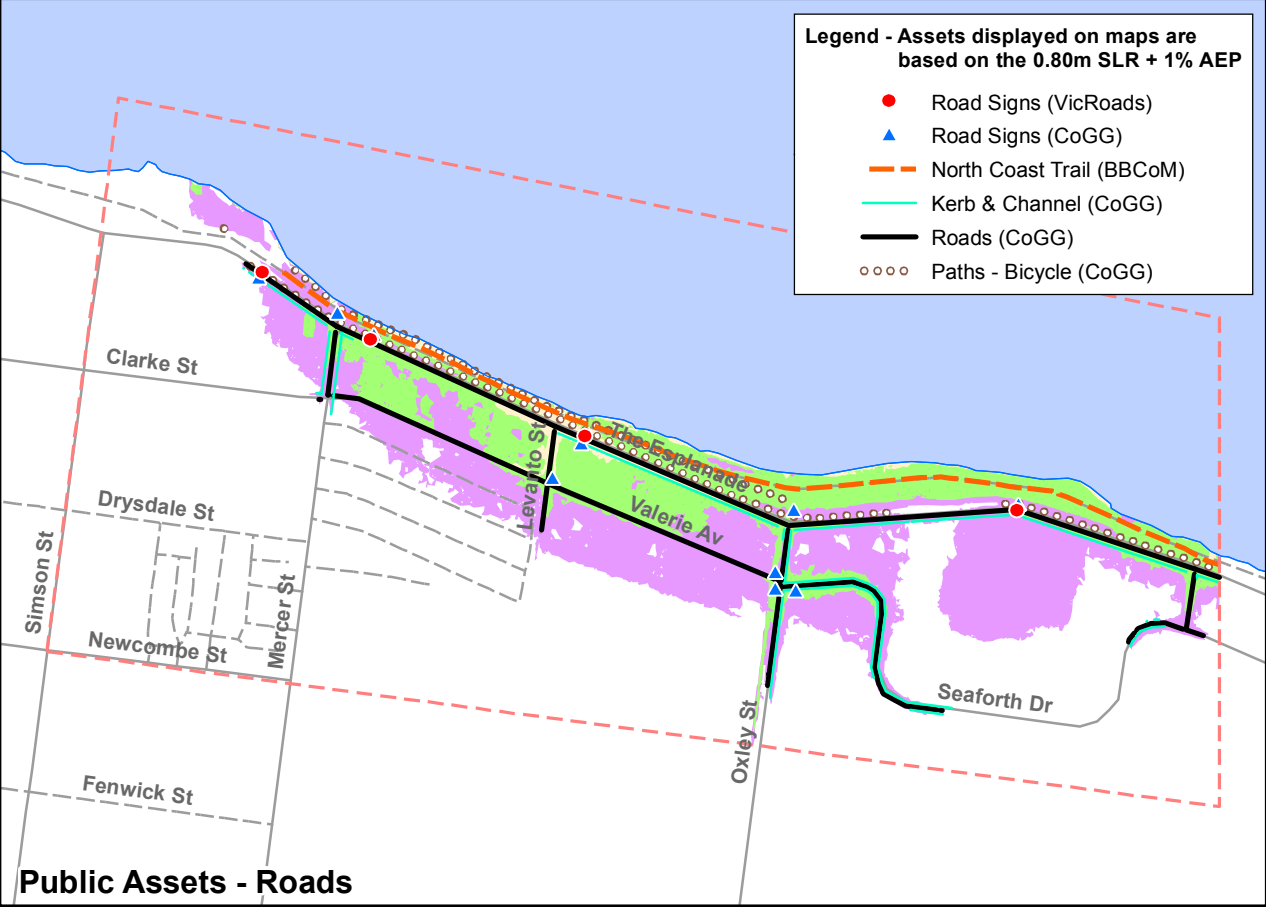
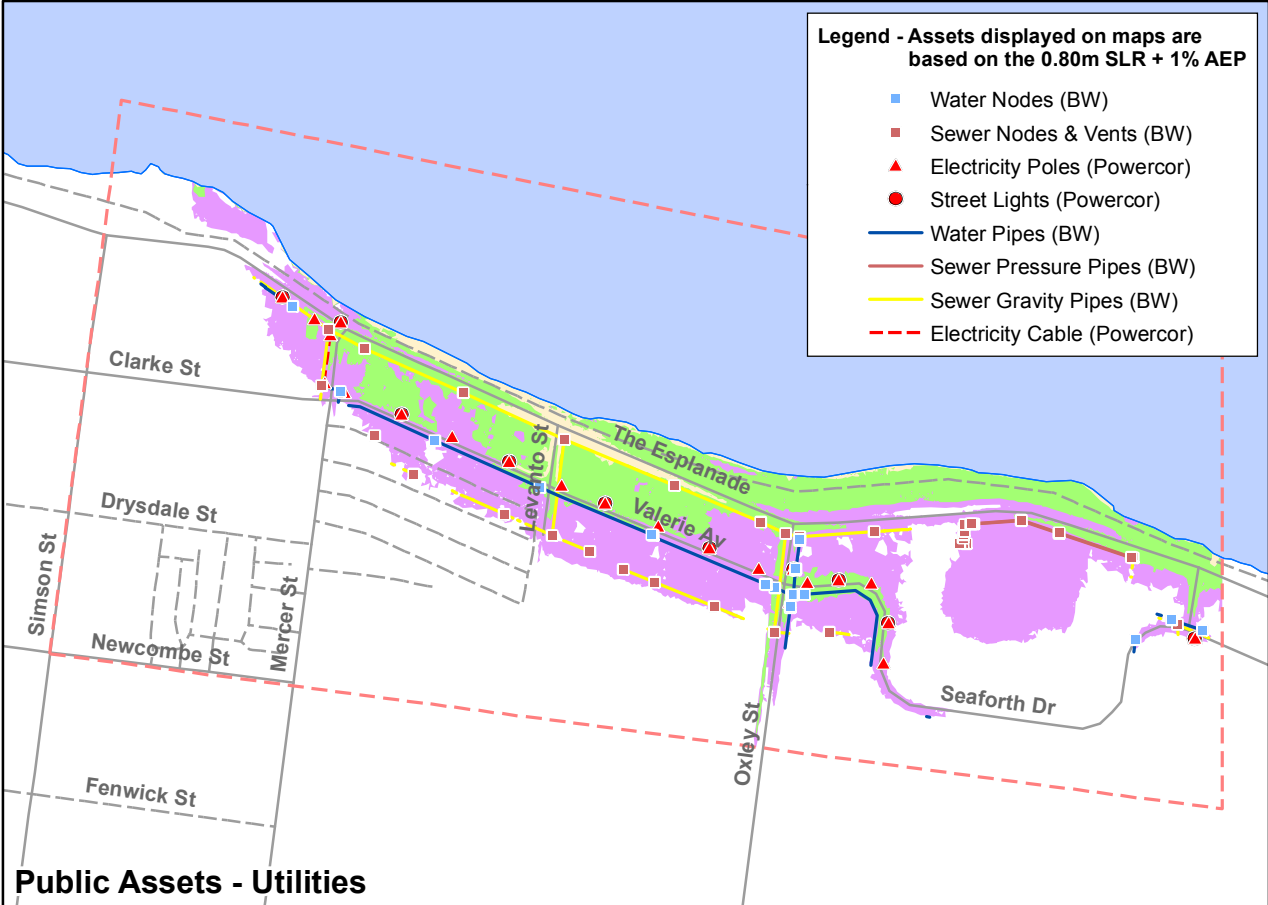


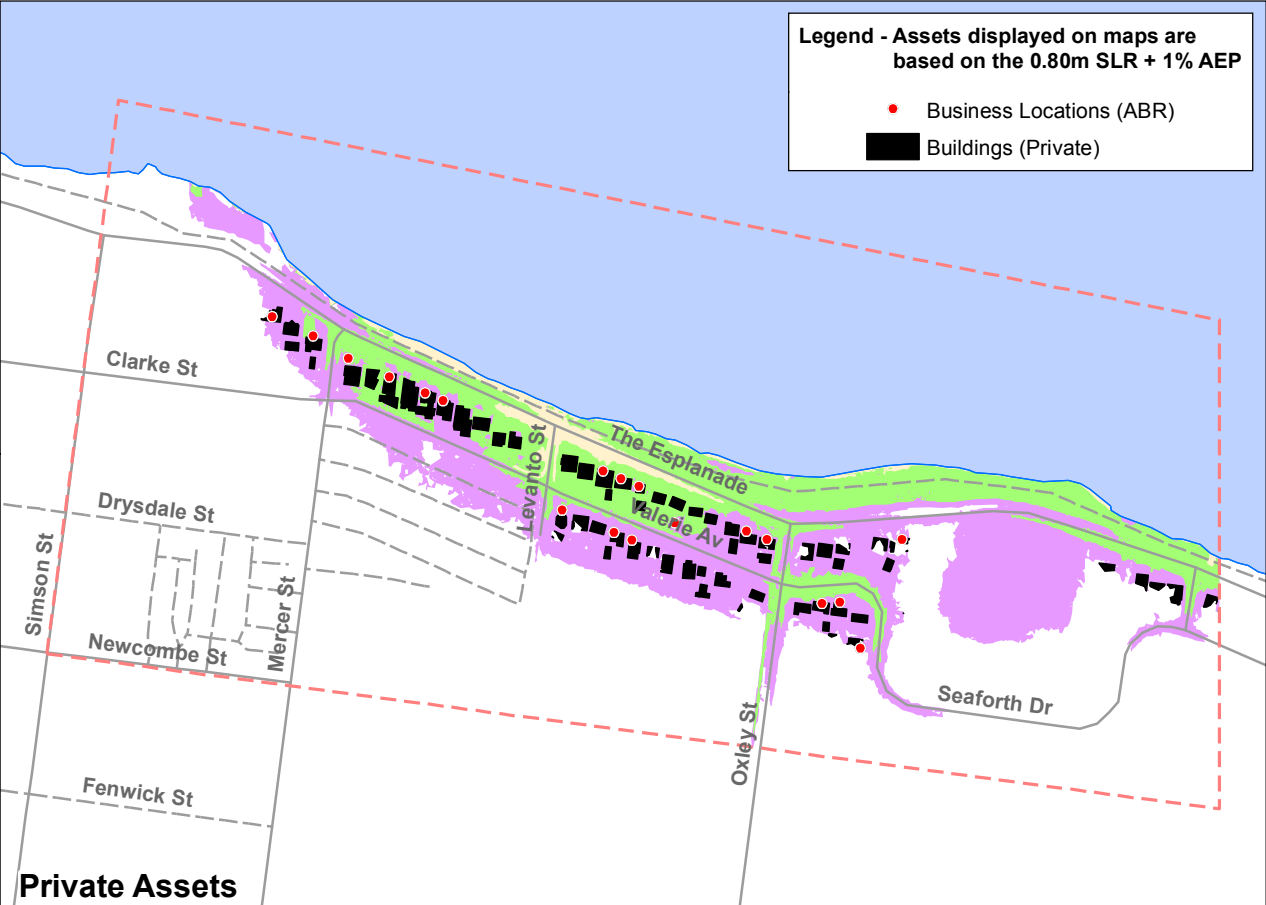
Public Assets - Drainage



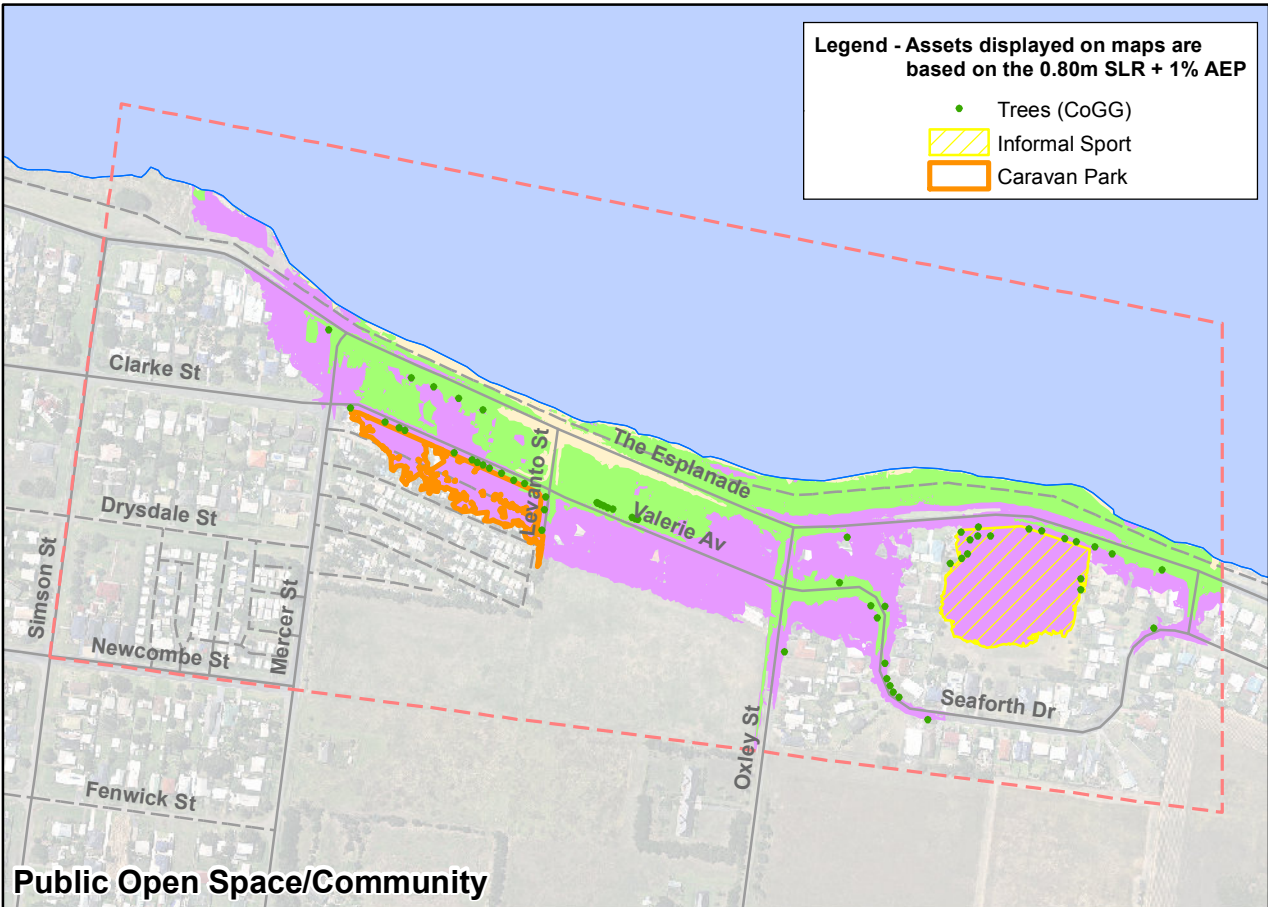
Public Assets - Roads



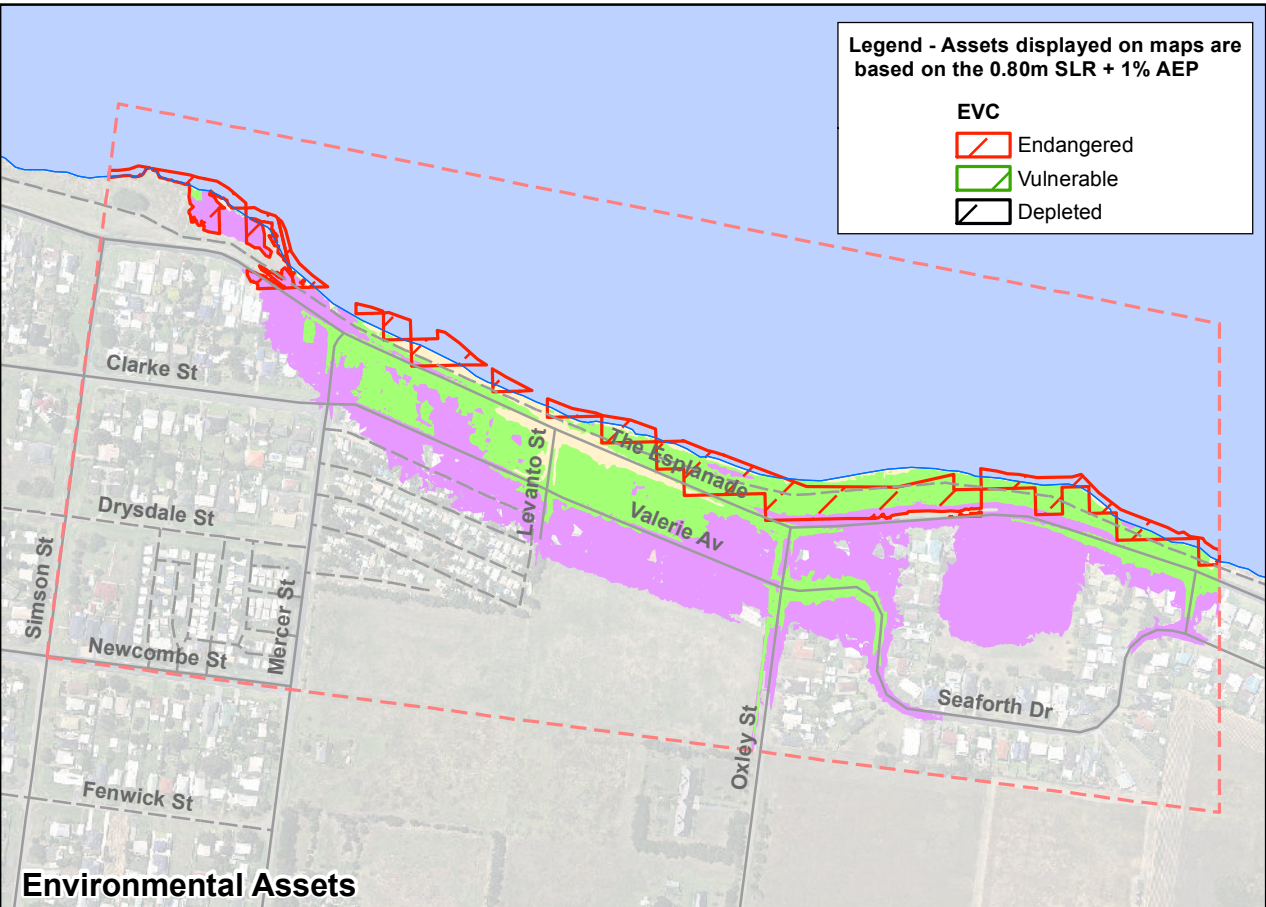
Public Assets - Utilities



Private Assets



Public Open Space/Community



Environmental Assets

Summary of Assets within Portarlington Esplanade West

Public Assets - Drainage

Assets located within 0.20m SLR +1% AEP:	
Drainage Pipes (CoGG) - Length (m) =	77
Drainage Pits (CoGG) - Number =	10
Assets located within 0.50m SLR +1% AEP:	
Drainage Pipes (CoGG) - Length (m) =	694
Drainage Pits (CoGG) - Number =	32
Assets located within 0.80m SLR +1% AEP:	
Drainage Pipes (CoGG) - Length (m) =	989
Drainage Pits (CoGG) - Number =	44

Public Assets - Roads

Assets located within 0.20m SLR +1% AEP:	
Kerb & Channel (CoGG) - Length (m) =	106
North Coast Trail (BBCoM) - Length (m) =	200
Paths - Bicycle (CoGG) - Length (m) =	275
Road Signs (CoGG) - Number =	1
Road Signs (VicRoads) - Number =	1
Roads (CoGG) - Length (m) =	204
Assets located within 0.50m SLR +1% AEP:	
Kerb & Channel (CoGG) - Length (m) =	782
North Coast Trail (BBCoM) - Length (m) =	851
Paths - Bicycle (CoGG) - Length (m) =	892
Road Signs (CoGG) - Number =	6
Road Signs (VicRoads) - Number =	2
Roads (CoGG) - Length (m) =	1062
Assets located within 0.80m SLR +1% AEP:	
Kerb & Channel (CoGG) - Length (m) =	1495
North Coast Trail (BBCoM) - Length (m) =	933
Paths - Bicycle (CoGG) - Length (m) =	1378
Road Signs (CoGG) - Number =	10
Road Signs (VicRoads) - Number =	4
Roads (CoGG) - Length (m) =	2070

Public Assets - Utilities

Assets located within 0.20m SLR +1% AEP:	
Sewer Gravity Pipes (BW) - Length (m) =	109
Sewer Nodes (BW and BCCoM) - Number =	1
Assets located within 0.50m SLR +1% AEP:	
Electricity Cable (Powercor) - Length (m) =	1
Electricity Poles (Powercor) - Number =	11
Sewer Gravity Pipes (BW) - Length (m) =	583
Sewer Nodes (BW and BCCoM) - Number =	8
Sewer Pressure Pipes (BW) - Length (m) =	19
Street Lights (Powercor) - Number =	5
Water Nodes (Barwon Water) - Number =	5
Water Pipes (Barwon Water) - Length (m) =	192
Assets located within 0.80m SLR +1% AEP:	
Electricity Cable (Powercor) - Length (m) =	45
Electricity Poles (Powercor) - Number =	22
Sewer Gravity Pipes (BW) - Length (m) =	1248
Sewer Nodes (BW and BCCoM) - Number =	37
Sewer Pressure Pipes (BW) - Length (m) =	348
Street Lights (Powercor) - Number =	10
Water Nodes (Barwon Water) - Number =	22
Water Pipes (Barwon Water) - Length (m) =	803

Private Assets

Assets located within 0.50m SLR +1% AEP:	
Buildings (Private) - Area (ha) =	0.27
Buildings (Private) - Number =	22
Business Locations (ABR) - Number =	10
Assets located within 0.80m SLR +1% AEP:	
Buildings (Private) - Area (ha) =	0.84
Buildings (Private) - Number =	68
Business Locations (ABR) - Number =	33

Public Open Space and Community Assets

Assets located within 0.50m SLR +1% AEP:	
Caravan Park - Area (ha) =	0.01
Trees (CoGG) - Number =	14
Assets located within 0.80m SLR +1% AEP:	
Caravan Park - Area (ha) =	0.58
Informal Sport - Area (ha) =	1.21
Trees (CoGG) - Number =	59

Environmental Assets

Assets located within 0.20m SLR +1% AEP:	
EVC Count Area - Number =	8
EVC Count Area (ha) =	0.77
Assets located within 0.50m SLR +1% AEP:	
EVC Count Area - Number =	8
EVC Count Area (ha) =	1.73
Assets located within 0.80m SLR +1% AEP:	
EVC Count Area - Number =	8
EVC Count Area (ha) =	2.09

Breakdown by EVC:

Located within 0.20m SLR +1% AEP:		
EVC Count Area (ha)		
175	2	0.15
858	6	0.62
Located within 0.50m SLR +1% AEP:		
EVC Count Area (ha)		
175	2	0.16
858	6	1.57
Located within 0.80m SLR +1% AEP:		
EVC Count Area (ha)		
175	2	0.35
858	6	1.74

Portarlington Esplanade West
Total Area = 33.60 ha

Glossary

ABR - Australian Business Register
AEP - Annual Exceedence Probability (1% AEP correlates to a 1 in 100 year event)
BBCoM - Bellarine Bayside Committee of Management
BW - Barwon Water
CCMA - Corangamite Catchment Management Authority
CoGG - City of Greater Geelong
EVC - Ecological Vegetation Classes
LCHA - Local Coastal Hazard Assessment
LGA - Local Government Area
SLR - Sea Level Rise