

Summary of Assets within Newcomb West

Public Assets - Drainage

Assets located within 0.20m SLR +1% AEP:	
Drainage Pipes (CoGG) - Length (m) =	938
Drainage Pits (CoGG) - Number =	15
Assets located within 0.50m SLR +1% AEP:	
Drainage Pipes (CoGG) - Length (m) =	1161
Drainage Pits (CoGG) - Number =	19
Assets located within 0.80m SLR +1% AEP:	
Drainage Pipes (CoGG) - Length (m) =	2046
Drainage Pits (CoGG) - Number =	52

Public Assets - Roads

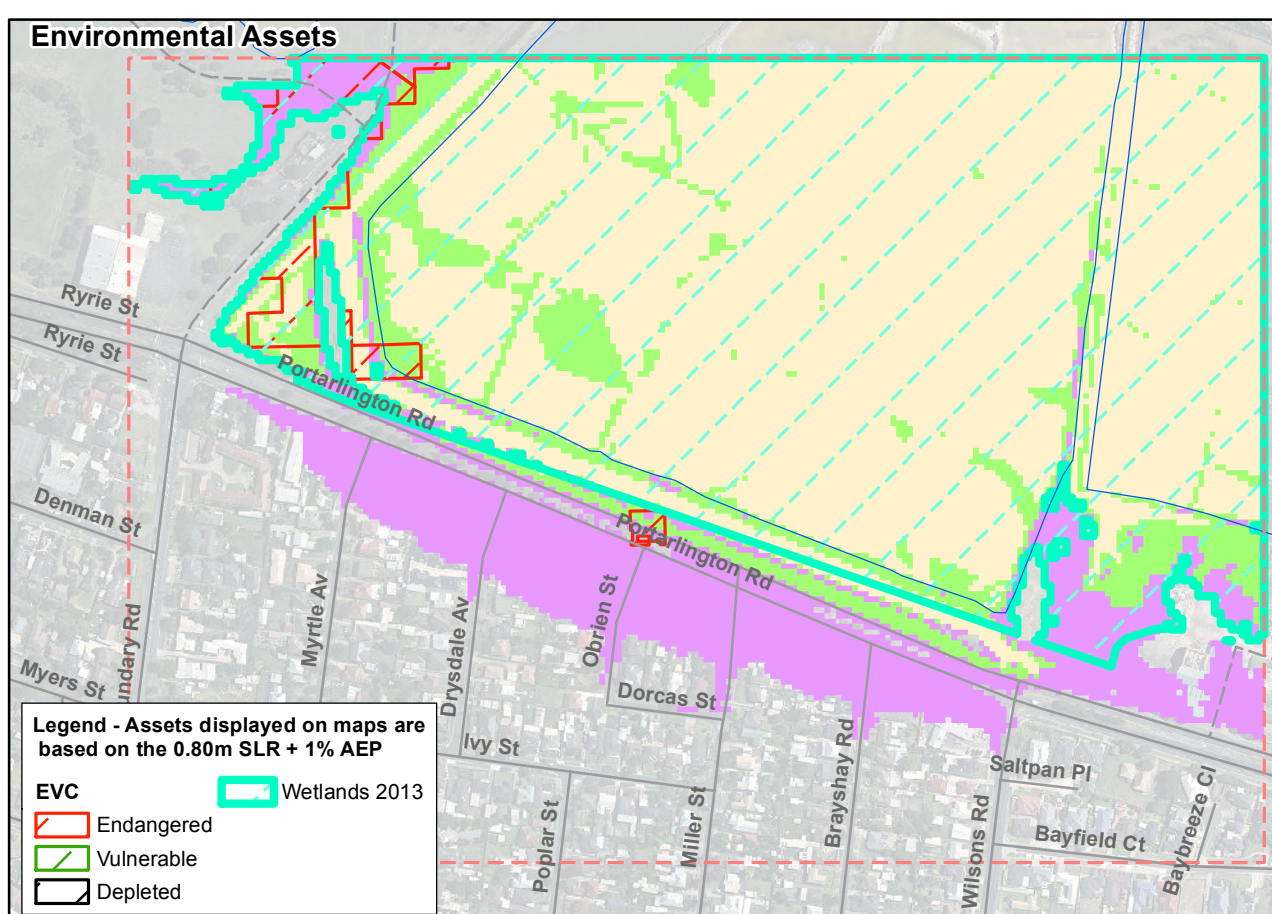
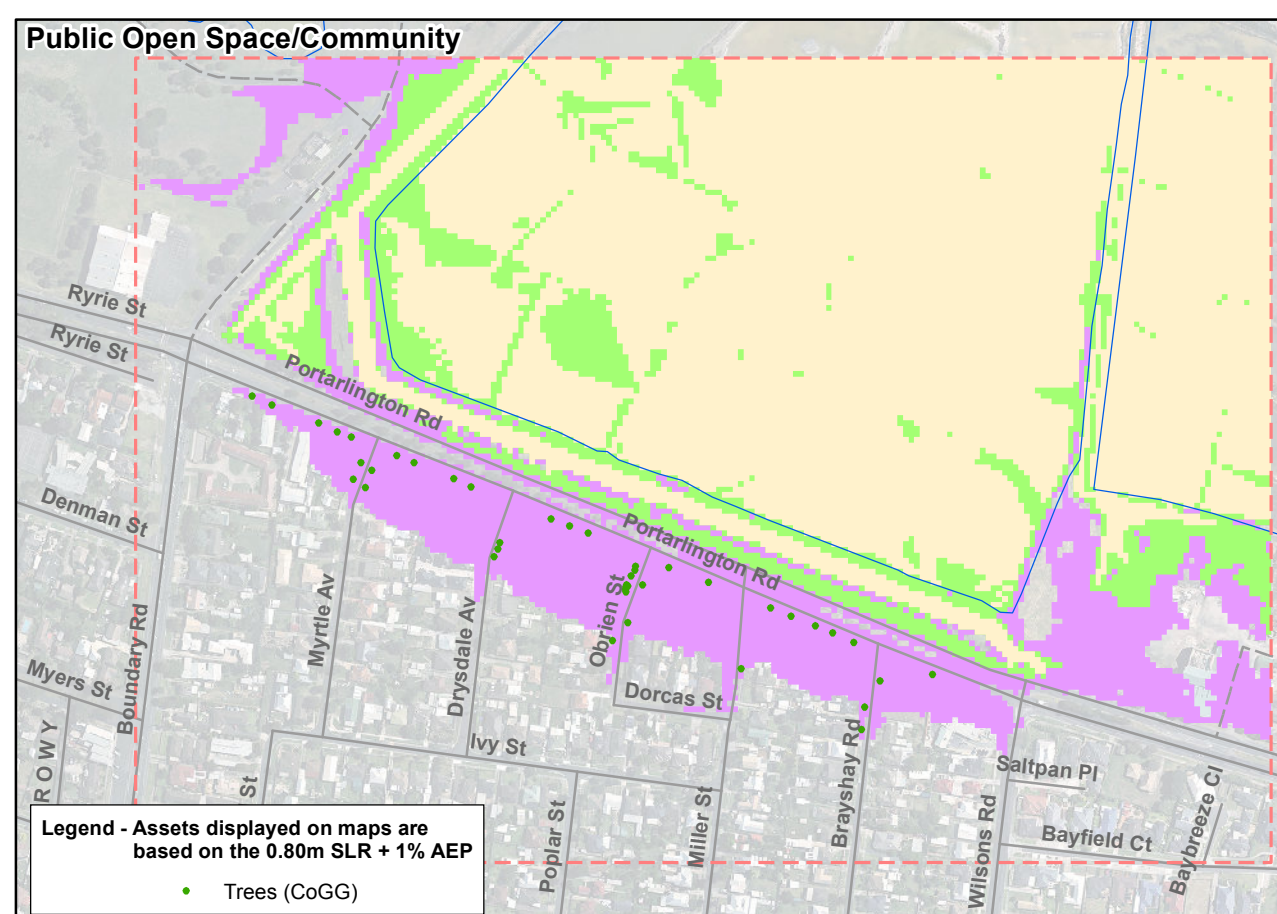
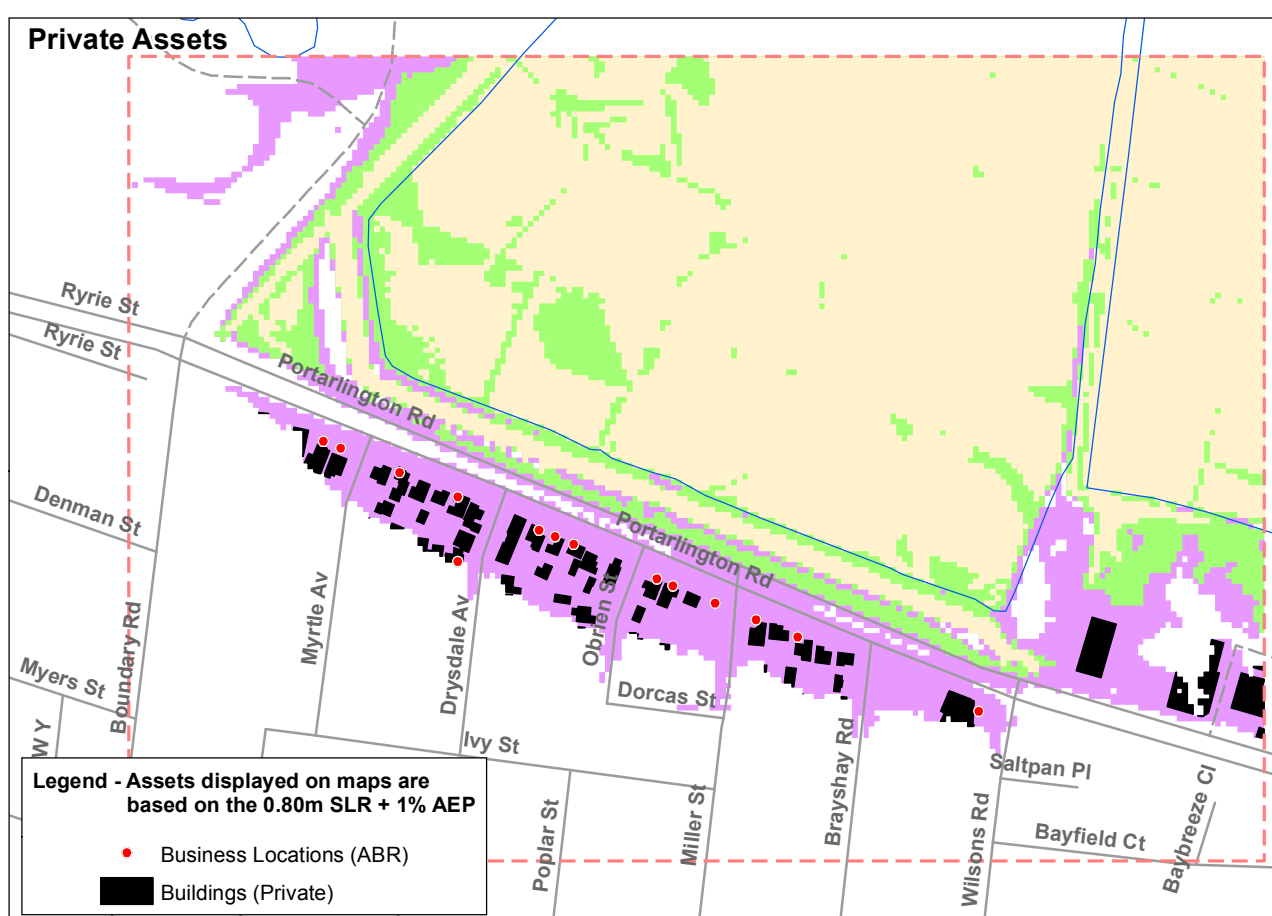
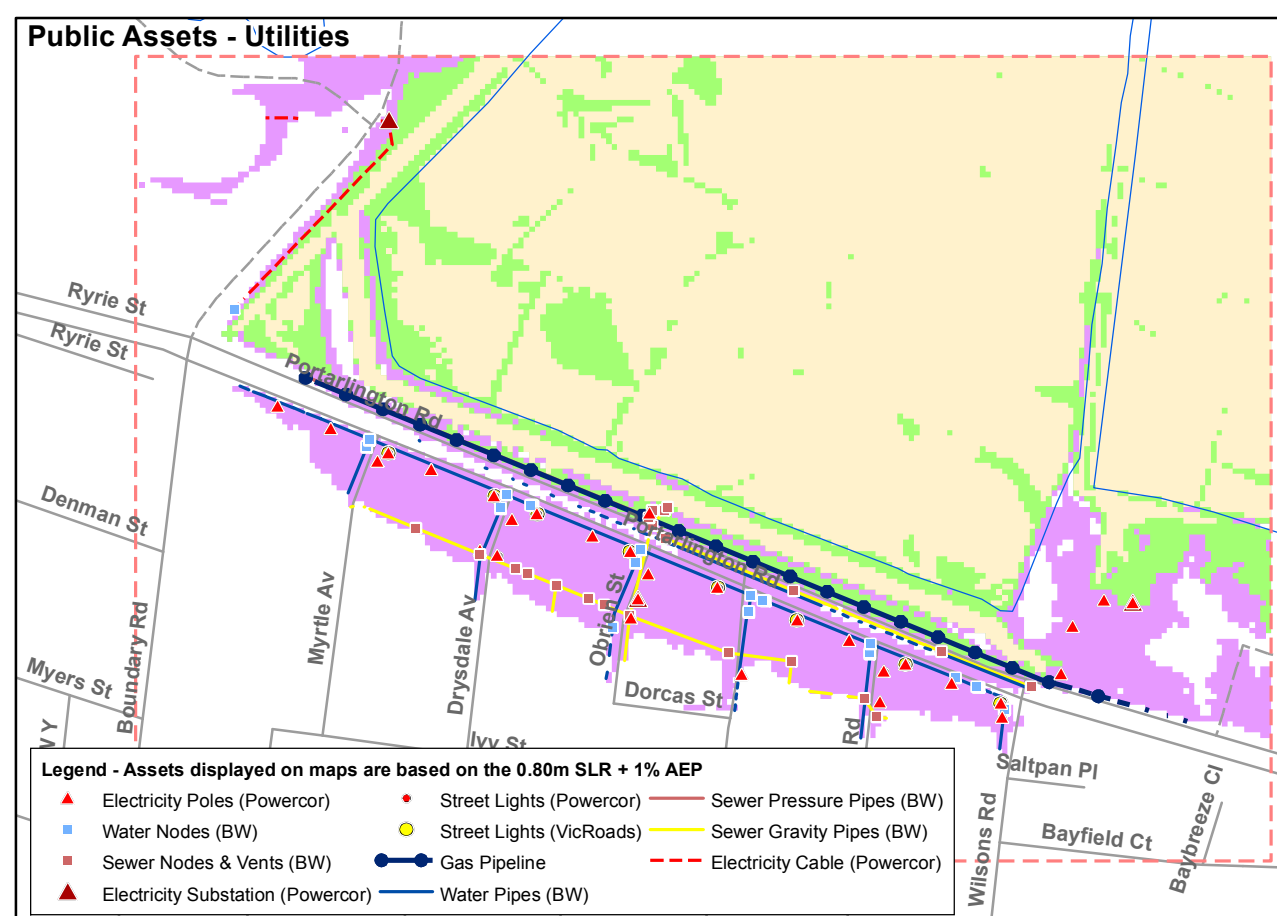
Assets located within 0.20m SLR +1% AEP:	
Paths - Bicycle (CoGG) - Length (m) =	543
Assets located within 0.50m SLR +1% AEP:	
Paths - Bicycle (CoGG) - Length (m) =	614
Road Signs (CoGG) - Number =	1
Roads (VicRoads) - Length (m) =	14
Assets located within 0.80m SLR +1% AEP:	
Footpath (CoGG) - Length (m) =	1208
Kerb & Channel (CoGG) - Length (m) =	1765
Paths - Bicycle (CoGG) - Length (m) =	1293
Road Signs (CoGG) - Number =	21
Road Signs (VicRoads) - Number =	2
Roads (CoGG) - Length (m) =	343
Roads (VicRoads) - Length (m) =	984

Public Assets - Utilities

Assets located within 0.20m SLR +1% AEP:	
Gas Pipeline - Length (m) =	1
Sewer Nodes (BW and BCCoM) - Number =	1
Assets located within 0.50m SLR +1% AEP:	
Electricity Cable (Powercor) - Length (m) =	95
Electricity Poles (Powercor) - Number =	2
Electricity Substation (Powercor) - Number =	1
Gas Pipeline - Length (m) =	453
Sewer Gravity Pipes (BW) - Length (m) =	11
Sewer Nodes (BW and BCCoM) - Number =	2
Sewer Pressure Pipes (BW) - Length (m) =	164
Assets located within 0.80m SLR +1% AEP:	
Electricity Cable (Powercor) - Length (m) =	208
Electricity Poles (Powercor) - Number =	30
Electricity Substation (Powercor) - Number =	3
Gas Pipeline - Length (m) =	638
Sewer Gravity Pipes (BW) - Length (m) =	851
Sewer Nodes (BW and BCCoM) - Number =	20
Sewer Pressure Pipes (BW) - Length (m) =	272
Sewer Vents (Barwon Water) - Number =	1
Street Lights (Powercor) - Number =	12
Street Lights (VicRoads) - Number =	8
Water Nodes (Barwon Water) - Number =	30
Water Pipes (Barwon Water) - Length (m) =	1217

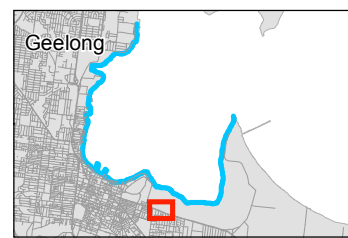
Public Open Space and Community Assets

Assets located within 0.80m SLR +1% AEP:	
Trees (CoGG) - Number =	42
Environmental Assets	
Assets located within 0.20m SLR +1% AEP:	
EVC Count Area - Number =	2
EVC Count Area (ha) =	0.16
Wetland Area (ha) =	19.35
Assets located within 0.50m SLR +1% AEP:	
EVC Count Area - Number =	4
EVC Count Area (ha) =	0.44
Wetland Area (ha) =	22.79
Assets located within 0.80m SLR +1% AEP:	
EVC Count Area - Number =	4
EVC Count Area (ha) =	1.01
Wetland Area (ha) =	24.63
Breakdown by EVC:	
Located within 0.20m SLR +1% AEP:	
EVC Count Area (ha)	55
55	2
0.16	
Located within 0.50m SLR +1% AEP:	
EVC Count Area (ha)	55
55	3
0.43	
Located within 0.80m SLR +1% AEP:	
EVC Count Area (ha)	55
55	3
0.97	
302	1
0.05	
Private Assets	
Assets located within 0.80m SLR +1% AEP:	
Buildings (Private) - Area (ha) =	0.7
Buildings (Private) - Number =	58
Business Locations (ABR) - Number =	21
Newcomb West Total Area = 48.36 ha	



Glossary

- ABR - Australian Business Register
- AEP - Annual Exceedence Probability (1% AEP correlates to a 1 in 100 year event)
- BW - Barwon Water
- CCMA - Corangamite Catchment Management Authority
- CoGG - City of Greater Geelong
- EVC - Ecological Vegetation Classes
- LCHA - Local Coastal Hazard Assessment
- LGA - Local Government Area
- SLR - Sea Level Rise



Legend Assets displayed on maps are based on the 0.80m SLR + 1% AEP

- Newcomb West Area Boundary
- Shoreline - LCHA (based on erosion scarp)
- Water Bodies (1:25K)
- LCHA 1% AEP + 0.20m SLR - Dynamic Model
- Coastal Protection Structure (Seawall) - Public
- LCHA 1% AEP + 0.50m SLR - Dynamic Model
- Coastal Protection Structure (Seawall) - Private
- LCHA 1% AEP + 0.80m SLR - Dynamic Model